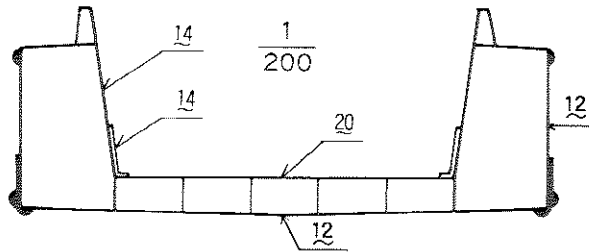


No.10 1,600 m³ 積

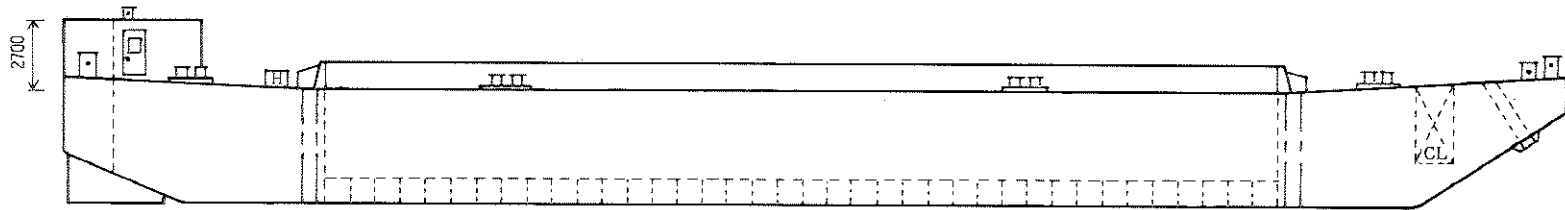
船体寸法 $60.0^m \times 14.0^m \times 4.5^m + (1.0)^m$

艙内寸法 $38.0^m \times \left(\frac{10.0^m + 9.0^m}{2}\right) \times 3.5^m + (1.0)^m$

船名 S-1606



※艫方向から押航可



1/300

