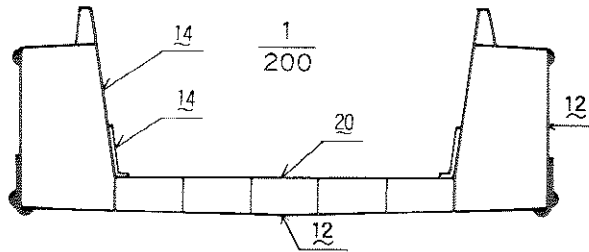


No.10 1,600 m³ 積

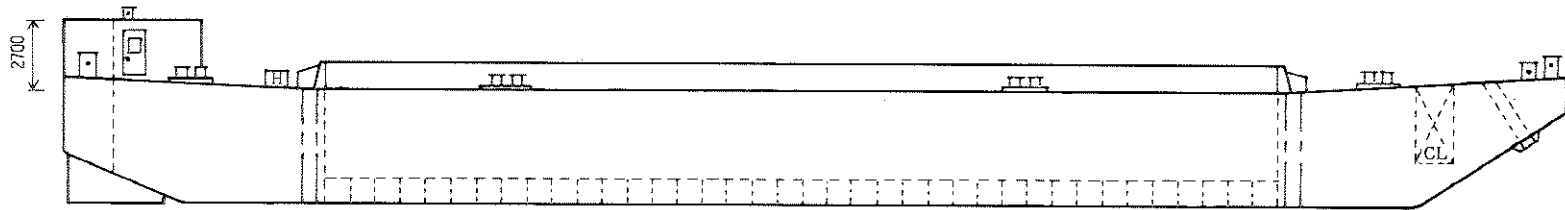


船体寸法 $60.0 \times 14.0 \times 4.5 + (1.0)$ (m)

艙内寸法 $38.0 \times \left(\frac{10.0 + 9.0}{2} \right) \times 3.5 + (1.0)$ (m)

船名 TS-1601

※艫方向から押航可



$\frac{1}{300}$

